



405 S. 8th St, Suite 290
Boise, Idaho 83702
p: 208.685.2855
f: 208.685.2857
info@think-arch.com

NEW DEVELOPMENT
THE 27 ELM
A HUNTER RENAISSANCE DEVELOPMENT
REDMOND OREGON



COVER SHEET
Sheet Title
AS NOTED
Scale
1602
Project Number
NOVEMBER 8, 2016
Date
16154 E21P.DWG
File Name

Revisions
E2.1P

GENERAL NOTES:

- 1 VERIFY ALL MOUNTING HEIGHTS OF ELECTRICAL CONNECTIONS WITH EQUIPMENT SUPPLIER PRIOR TO ROUGH-IN.
- 2 COORDINATE ALL WORK ON HVAC SYSTEMS WITH DIVISION 15.
- 3 ALL BREAKERS SUPPLYING MECHANICAL EQUIPMENT SHALL BE HACR RATED.
- 4 THERMAL OVERLOAD PROTECTION IS ONLY REQUIRED WHERE EQUIPMENT PROVIDED BY MECHANICAL CONTRACTOR DOES NOT INCORPORATE INTEGRAL THERMAL PROTECTION OF MOTOR. DIVISION 16 TO COORDINATE REQUIREMENTS WITH DIVISION 15 FOR ACTUAL EQUIPMENT SUPPLIED.
- 5 ALL BREAKERS SUPPLYING MECHANICAL EQUIPMENT SHALL BE HACR RATED.
- 6 CONTRACTOR SHALL COORDINATE ELECTRICAL SYSTEMS INSTALLATION TO AVOID CONFLICTS WITH DUCT WORKPIPING AND OTHER TRADES
- 7 ALL 120V, 1Ø, BREAKERS SUPPLYING CIRCUITS IN THE FOLLOWING AREAS SHALL BE PROVIDED WITH COMBINATION ARC-FAULT PROTECTION: FAMILY ROOMS, DINING ROOMS, LIVING ROOMS, PARLORS, LIBRARIES, DENS, BEDROOMS, SUNROOMS, RECREATION ROOMS, CLOSETS, HALLWAYS OR SIMILAR ROOMS OR AREAS. ARC FAULT SHALL BE INSTALLED EXCEPT WHERE NOT REQUIRED BY AHJ.
- 8 RECEPTACLES SHALL BE INSTALLED WITH THE PROVISIONS LISTED BELOW.

GENERAL ROOMS

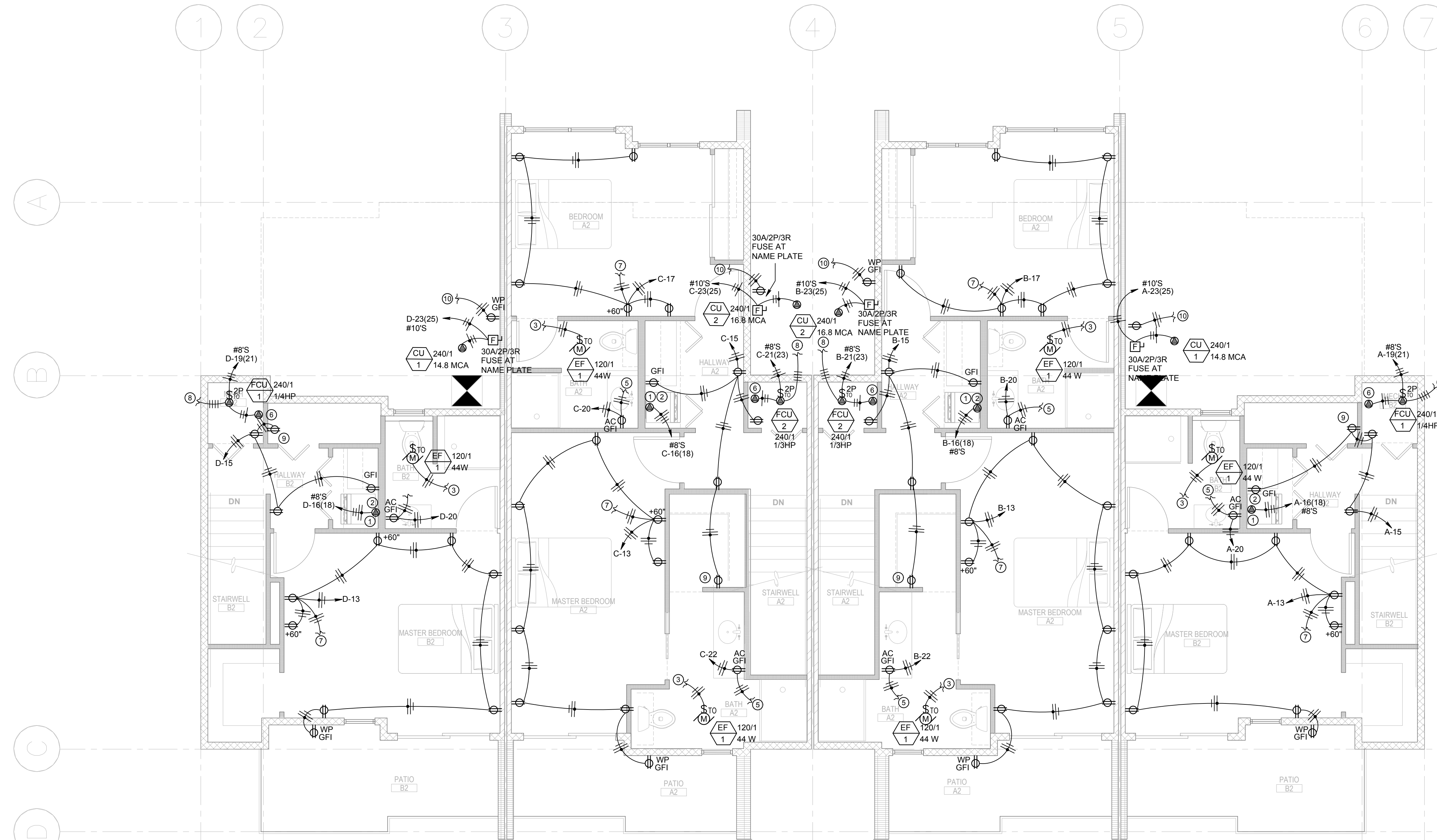
- WALL RECEPTACLES EVERY 12 FEET.
- RECEPTACLES ON ANY WALL SPACE MORE THAN 24 INCHES WIDE.
- HALLWAYS MORE THAN 10 FEET MUST HAVE AT LEAST ONE RECEPTACLE.
- 15 AMP CIRCUITS FOR GENERAL ROOMS ARE PERMITTED TO BE 20 AMP.
- ALL RECEPTACLES TO BE TAMPER RESISTANT TYPE.

RESIDENTIAL BATHROOMS

- ONLY INSTALL GFCI (GROUND FAULT CURRENT INTERRUPTER) RECEPTACLES IN BATHROOMS.
- THERE MUST BE A RECEPTACLE WITHIN 3 FEET OF THE OUTSIDE EDGE OF SINK BASIN.
- NO RECEPTACLES FACE-UP ON COUNTERTOPS.
- EACH BATHROOM RECEPTACLES MUST BE ON AT LEAST ONE SEPARATE 20 AMP. BRANCH CIRCUIT.

KEYED NOTES:

- 1 CONNECTION FOR WASHER, VERIFY CONNECTION WITH OWNER PRIOR TO ROUGH-IN.
- 2 CONNECTION FOR DRYER, VERIFY CONNECTION WITH OWNER PRIOR TO ROUGH-IN.
- 3 CONNECTION TO COMBINATION EXHAUST FAN/LIGHT. COORDINATE CONNECTION TYPE AND LOCATION WITH MECHANICAL CONTRACTOR. COMBINATION UNIT TO BE SWITCHED WITH LIGHT SWITCH. SEE SHEET E2.1L FOR ADDITIONAL INFORMATION.
- 4 PRIOR TO ROUGH-IN DIVISION 16 TO COORDINATE LOCATION AND MOUNTING HEIGHTS OF T-STAT OR SENSOR WITH DIVISION 15. DIVISION 16 TO FURNISH AND INSTALL BACKBOX, 1/2" CONDUIT, AND CONDUCTORS UP TO ABOVE CEILING. CONTINUE CONDUCTORS TO MECHANICAL EQUIPMENT INDICATED. DIVISION 15 TO FURNISH T-STAT OR SENSOR AND MAKE FINAL CONNECTIONS. COORDINATE SIZE AND NUMBER OF CONDUCTORS WITH DIVISION 15.
- 5 TO LIGHT FIXTURE IN BATHROOM. CONNECT SUCH THAT GFI DOES NOT TRIP FIXTURE AND/OR EXHAUST FAN.
- 6 CONNECTION TO FIELD INSTALLED 5KW ELECTRIC HEATER. COORDINATE ALL CONNECTION REQUIREMENTS WITH MECHANICAL CONTRACTOR.
- 7 CONNECT TO LIGHTING FIXTURES IN BEDROOM. SEE SHEET E2.0L FOR ADDITIONAL INFORMATION.
- 8 TO CONDENSING UNIT FOR CONTROL WIRING. COORDINATE REQUIREMENTS WITH MECHANICAL CONTRACTOR.
- 9 RECEPTACLE TO BE MOUNTED WITHIN MEDIA CABINET.
- 10 DOWN TO EXTERIOR RECEPTACLE ON FIRST FLOOR.



SECOND FLOOR POWER PLAN
SCALE: 1/4" = 1'-0"

FOR CITY REVIEW
NOT FOR CONSTRUCTION

e2co
electricalengineeringcompany
engineering 4 tomorrow
world wide web: e2co.com
800 s. industry way, suite 350
meridian, idaho 83642
phone: 208.378.4450
fax: 208.378.4451
e2co project #: 16154